



2026 ASRS Exhibitor and Sponsor Opportunities



Questions?

AMY BLYTH
ablyth@trihydro.com

PAUL GRISWOLD
pgriswold@peabodyenergy.com

BRENDA SCHLADWEILER
BSchladweiler@bksenvironmental.com

2026 Annual Meeting American Society of Reclamation Sciences

Landscapes in Reclamation

We're thrilled to announce that the 2026 American Society for Reclamation Sciences (ASRS) Annual Meeting, in collaboration with the University of Wyoming–School of Energy Resources (UW–SER), will be held June 7–11, at the University of Wyoming's Marian H. Rochelle Gateway Center.

ASRS and UW–SER are offering several varied partner and exhibit opportunities to encourage outstanding collaboration for this event.

Recognition for your organization can be obtained by committing to one (or more!) of the options listed in the following pages.

TENTATIVE EXHIBITOR SCHEDULE

Sunday, June 7: Set-up, 10:00am – 6:00pm

Sunday, June 7: Exhibitor and Sponsor Welcome Reception, 6:00pm – 8:00pm

Monday and Tuesday: 7:00am – 5:00pm

Tuesday, June 9: Tear-down, 5:00pm



Sponsorship Packages

Yellowstone \$10,000

- Two exhibit booths in a premium location
- Eight complimentary conference registrations
- Full page advertisement in the program
- Prominent logo placement in printed program
- Hyperlinked logo on ASRS's website
- Advertisement in Reclamation Matters
- Recognition at the 2026 annual meeting

Devil's Tower \$7,500

- Complimentary exhibit booth
- Six complimentary conference registrations
- Prominent logo placement in the printed program
- Hyperlinked logo on ASRS's website
- Recognition at the 2026 annual meeting

Grand Teton \$5,500

- Complimentary exhibit booth
- Four complimentary conference registrations
- Prominent logo placement in the printed program
- Hyperlinked logo on ASRS's website
- Recognition at the 2026 annual meeting

Bison \$3,500

- Complimentary exhibit booth
- Three complimentary conference registrations
- Logo placement in the printed program
- Hyperlinked logo on ASRS's website
- Recognition at the 2026 annual meeting

Bucking Horse \$2,500

- Complimentary exhibit booth
- Two complimentary conference registrations
- Logo placement in the printed program
- Hyperlinked logo on ASRS's website
- Recognition at the 2026 annual meeting

Exhibit Opportunities

All refreshment breaks will be held in the indoor exhibit area

Indoor Exhibitor – \$1,500 per booth

Upgrade to the Bucking Horse sponsorship for only \$1000 more!

- Each indoor exhibit booth is 10'x5'
 - Each booth includes: 8'x2.5' skirted table with two chairs
- One complimentary conference registration per booth
- Recognition at the conference

Outdoor Exhibitor – \$500 per booth

- Each outdoor exhibit space is 36'x19'
- One complimentary conference registration per booth
- Recognition at the conference

Indoor/Outdoor Exhibitor – \$1750

Two booth spaces at a discount!

- One indoor and one outdoor booth space
- Two complimentary conference registrations
- Recognition at the conference

Laramie is home of the University of Wyoming and is near many historic land and water reclamation sites. The 2026 conference will focus on research, technical, and regulatory issues associated with the land and water implications of anthropogenic land disturbances.

Join us for technical sessions, field tours, workshops, and open discussions relating to mining, reclamation, restoration, reforestation, and land management issues.

Collaboration Opportunities

2026 PROSPECTUS

Two opportunities available!

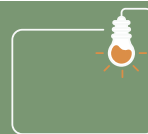


SOCIAL EVENT AND DINNER

Monday, June 8

\$3,000

Two opportunities available!



EARLY CAREER PROFESSIONALS EVENT

Tuesday, June 9

\$2,000

Four opportunities available!



PROFESSIONAL AWARDS LUNCH

Monday, June 8

\$1,500

Four opportunities available!



STUDENT AWARDS LUNCH

Wednesday, June 10

\$1,500

Two opportunities available!



FULL DAY BREAKS

Monday or Tuesday

\$800

Two opportunities available!



Tuesday,
June 9

WILD WOMEN OF RECLAMATION

Breakfast and presentation ahead of the day's technical sessions

\$500

Three opportunities available!



MORNING BREAKS

Monday, Tuesday, or Wednesday

\$500

Two opportunities available!



AFTERNOON BREAKS

Monday or Tuesday

\$500

NEW IN 2026

One opportunity available!



LOGO'D LANYARDS

\$3,500

Many opportunities available!



ANY ONE SESSION SPONSORSHIP

Monday, Tuesday, or Wednesday

\$750 for special sessions or
\$500 for standard sessions

Draft Schedule Overview

2026 PROSPECTUS

Sunday, June 7	
Technical Workshops	Registration Opens
Exhibit Set Up	Sponsor and Exhibitor Welcome
Monday, June 8	
Plenary and Keynote Speakers	Technical Sessions
Professional Awards and Business Luncheon	Social Event and Dinner
Tuesday, June 9	
Plenary and Keynote Speakers	Technical Sessions
Exhibit Teardown	ECP Poster Session and Social Event
Wednesday, June 10	
Technical Sessions	Student Awards Luncheon
Short Tours (beginning in the afternoon)	
Thursday, June 11	
All Day Tours	



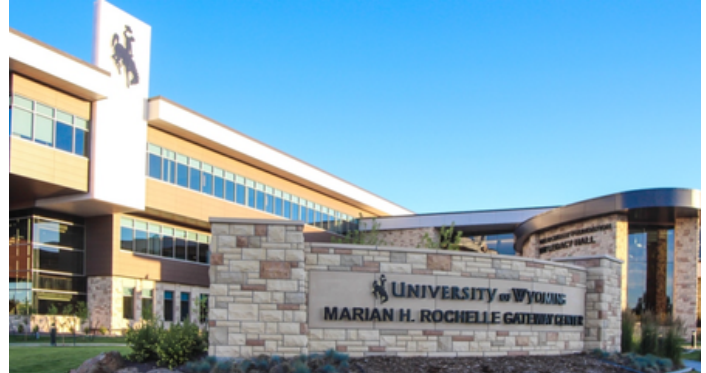
Venues

Marian H. Rochelle Gateway Center

Conference and Networking Space

For 10 years, the Marian H. Rochelle Gateway Center has served as more than just a building —it's been the heart of the University of Wyoming's first impressions. Standing tall as the university's grand front door, this iconic space has embodied Wyoming's spirit of excellence, hospitality and ambition — greeting students, alumni and visitors alike.

Tamara Linse, University of Wyoming Foundation



Hilton Garden Inn Laramie

Primary hotel block – 0.1 mile from conference



Stay where all the energy is! This hotel is a two-minute walk from the conference venue and a three-minute walk from the War Memorial Football Stadium and is near shopping and bars. They have an indoor pool, fitness center, and free WiFi. Pets are welcome too.

Book your complimentary airport shuttle today!

Holiday Inn Laramie University Area

0.6 mile from conference

The Laramie Holiday Inn is conveniently located close to I-80 and just two blocks from the University of Wyoming and located 7 miles from the Laramie Regional Airport LAR. They have an indoor pool, fitness center, and free WiFi. Pets are welcome too.



Hampton by Hilton – Laramie

1 mile from conference



The Hampton is one mile from the Marian H. Rochelle Gateway Center, just off I-80 and has a free hot daily breakfast, free WiFi, a fitness center, indoor pool, and pet friendly rooms.



Exhibit and Sponsor Application

APPLICATION

Company Name:

Company Contact and Title:

Address:

City & Province/State:

Zip Code:

Telephone:

Email Address:

Website:

Name of Complimentary Representative(s) Attending (if applicable):

Branding

To ensure your company is recognized properly, please send your 300 DPI logo to asrs@assochq.org no later than April 1, 2026.

Contract for Exhibit Space

For the sum of \$ _____ USD, we are hereby requesting to reserve _____ exhibit space(s) for the company listed on this form at the ASRS Annual Meeting being held at the Marian H. Rochelle Gateway Center in Laramie, WY from June 7-11, 2026. We enclose herewith our check/credit card details payable to the **American Society of Reclamation Sciences**, in the sum of \$ _____ USD. All rules and regulations governing the exhibit have been read by us and are hereby accepted and are a part of the contract, and we agree to comply with them. It is agreed that in the event ASRS shall fail to open the exhibition or furnish space to us, it will refund all sums paid hereunder.

Submission and Contact

Please complete and return pages 1-3 of this form to asrs@assochq.org by the application deadline of **April 1, 2026**. If you need any assistance, you can reach the ASRS administrative team by emailing asrs@assochq.org or calling 217-356-3182.

DATE:

COMPANY:

SIGNED BY (print):

TITLE:

SIGNATURE:

Sponsorship & Exhibit Fees



******(2) exhibit booths included

*****(1) exhibit booth included

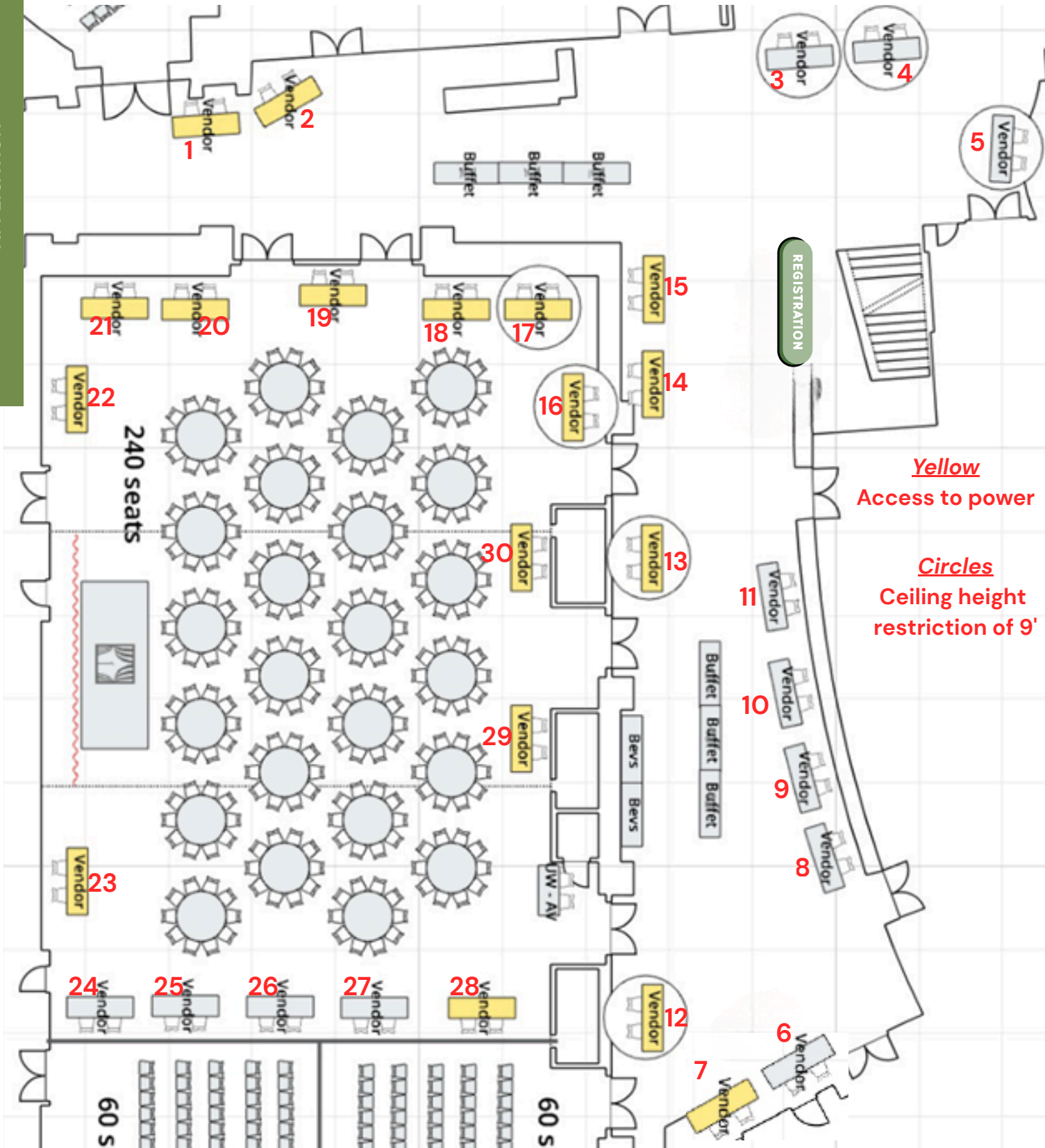
PACKAGE OPPORTUNITIES	COST	TOTAL
Yellowstone**	\$10,000	
Devil's Tower*	\$7,500	
Grand Teton*	\$5,500	
Bison*	\$3,500	
Bucking Horse*	\$2,500	
A LA CARTE SPONSORSHIPS	COST	TOTAL
Logo'd Lanyards	\$3,500	
Social Event and Dinner	\$3,000	
Early Career Professional Event	\$2,000	
Professional Awards Lunch	\$1,500	
Student Awards Lunch	\$1,500	
Special Sessions	\$750 each	
Standard Sessions	\$500 each	
Full Day Break	\$800 each	
Morning Break	\$500 each	
Afternoon Break	\$500 each	
Wild Women of Reclamation	\$500	
A LA CARTE EXHIBITS	COST	TOTAL
Indoor Exhibit Booth	\$1,500 each	
Outdoor Exhibit Booth	\$500 each	
Indoor/Outdoor Exhibitor	\$1,750 each	
Booths are assigned on a first come, first served basis. Please list your top three preferred exhibit spaces (see next page) below and any potential exhibitors you do not wish to be placed next to. We will do our best to accommodate but limited space may prevent it.		

APPLICATION

Indoor Exhibit Spaces



APPLICATION



INFORMATION AND RULES GOVERNING EDUCATIONAL PARTNERSHIPS & EXHIBITS

SPONSOR AND EXHIBIT ASSIGNMENTS

All sponsor and exhibitor assignments will be dealt with according to partner level and then on a first come, first served basis, providing the application is received by the deadline date of **April 1, 2026**.

EXHIBIT SPACE ASSIGNMENT

Exhibit spaces will be assigned on a first come, first served basis, provided the application is received by the deadline date of **April 1, 2026**. The Conference Planners reserve the right to make reasonable adjustments in the location of tables for the benefit of the exhibitor and the betterment of the total exhibit experience for all attendees.

USE OF EXHIBIT SPACE

The Conference Planners reserve the right to decline or prohibit any exhibit or part of an exhibit which, in their opinion, is not suitable and in keeping with the character of the Conference. No spaces shall be sublet without the direct written consent of the Conference Planners. Displays will be permitted on the exhibit floor only by official exhibitors. Distribution of advertising matter by representatives of firms who are not official exhibitors is strictly forbidden.

The Conference Planners reserve the right to restrict exhibits to a minimum noise level and to suitable methods of operation and display of materials. If, for any reason, an exhibit or its contents are deemed objectionable by ASRS, the exhibit will be subject to removal. This reservation includes persons, things, conduct, printed material, or any item of poor character which the ASRS considers objectionable to the conference's well-being. In the event that an eviction or restriction is enforced, ASRS will not be liable for refunding rental fees or funds for exhibit equipment rental except at their own discretion. The exhibitor agrees that ASRS may substitute the actual space assigned to the exhibitor if necessary.

Exhibitors are urged to use novel and unique ways to attract attention to their exhibit space. The basic responsibility for attracting participants to the exhibit is with the exhibitors.

EXHIBIT SPACES, HOURS OF OPERATION & EQUIPMENT

Exhibit booth set-up will include an 8' ft skirted table and two chairs. If you need electrical, Wifi, or additional equipment, please share those needs with the Conference Planner and they will help coordinate.

Continued on the next page

SECURITY & LIABILITIES

ASRS, the convention facilities, or their corporate entities will not be responsible for loss of any material by or for any cause. Each exhibitor must make provision for the safeguarding of their goods, materials, equipment, and display at all times, and exhibitors are urged to carry their own insurance through their own sources at their own expense.

The management will exercise care for the protection of the exhibitors, materials, and displays. Beyond this, ASRS, or any officer or staff member, will not be responsible for the safety of the property of the exhibitor, their agents, and employees from theft, damage by fire, accident, or any other cause.

The exhibitor hereby assumes entire responsibility and hereby agrees to protect, defend, indemnify and save ASRS, the convention facilities, its owners, its operator, and each of their respective parents, subsidiaries, affiliates, employees, officers, directors, and agents harmless against all claims, losses or damages to persons or property, governmental charges or fines and attorney's fees arising out of or caused by its installation, removal, maintenance, occupancy or use of the exhibition premises or a part thereof, excluding any such liability caused by the sole gross negligence of the Hotel and its employees and agents.

The exhibitor shall obtain and keep in force during the term of the installation and use of the exhibit premises, policies of Comprehensive General Liability Insurance and Contractual Liability Insurance, insuring and specifically referring to the Contractual liability set forth in this Exhibit Agreement, in an amount not less than \$2,000,000 Combined Single Limit for personal injury and property damage.

CANCELLATION POLICY

All confirmed/contracted exhibit space(s) cancelled on/before May 6 2026 will be subject to a \$500.00 USD service charge per space. All cancellations on/after May 7, 2026 will forfeit the entire booth fee.