

Presented by Christina Johnson, PG

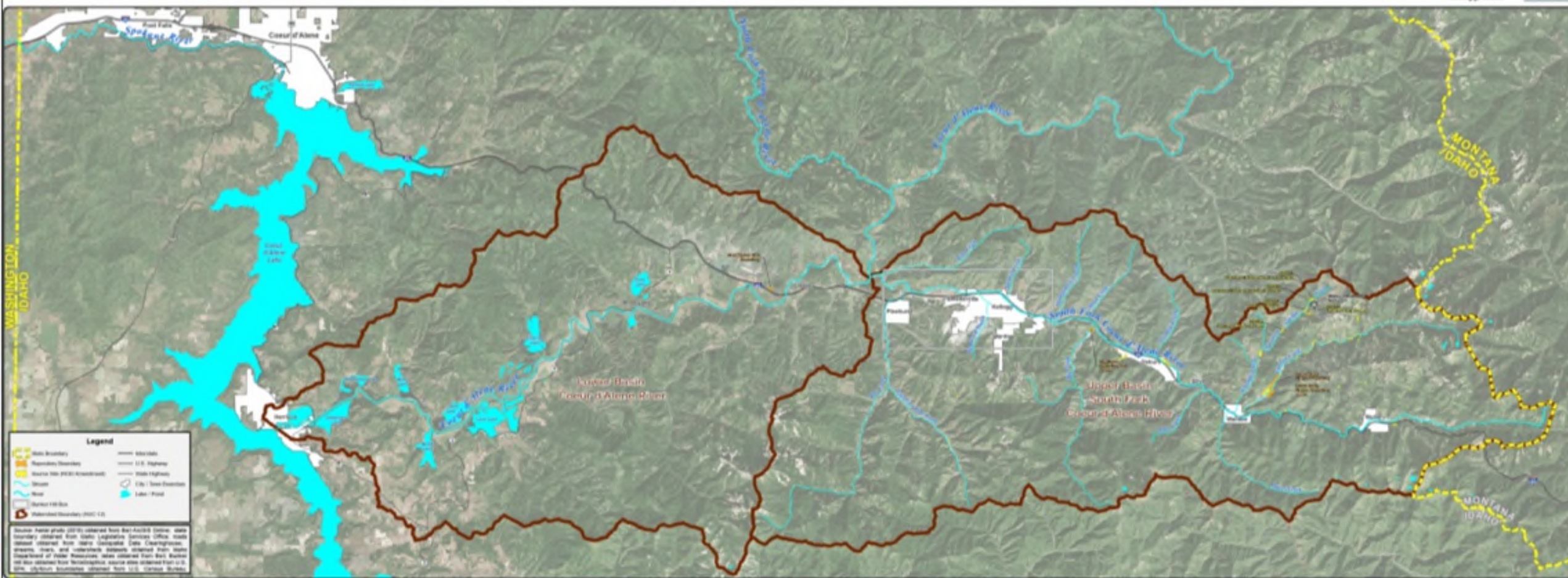
# Remedial Action Effectiveness at the Bunker Hill Superfund Site

June 6, 2023 - American Society of Reclamation Sciences, Boise, ID

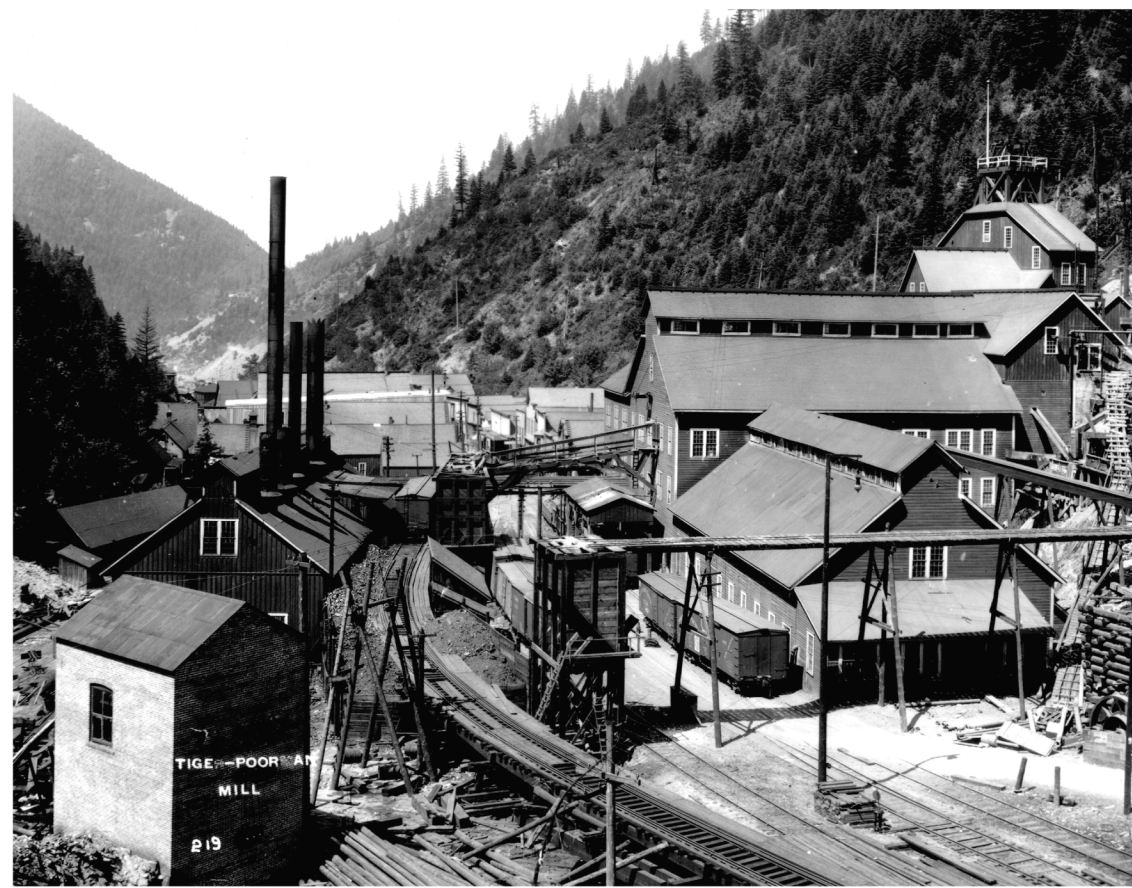


MAUL FOSTER ALONGI

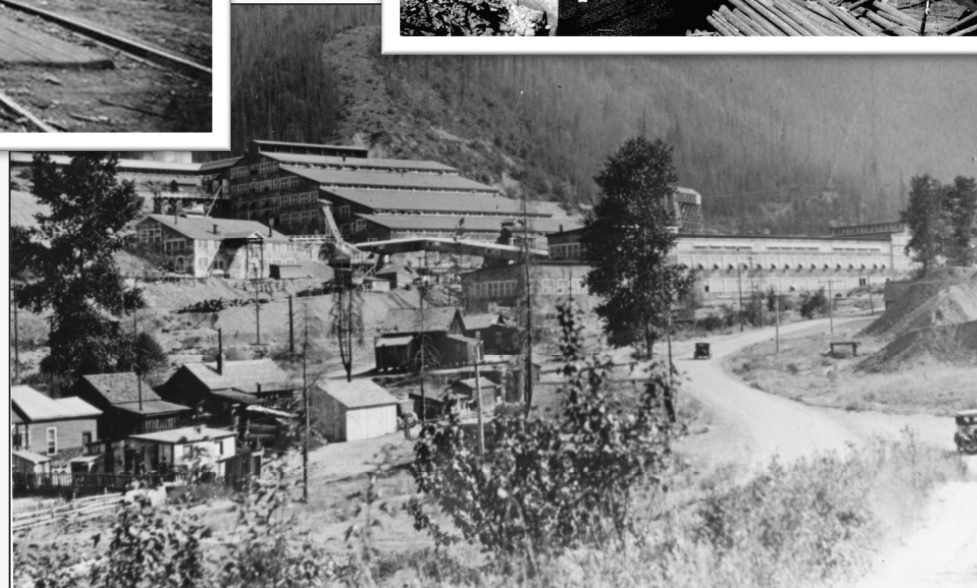
# Bunker Hill Superfund Site



# Bunker Hill History



**Photo credit:  
Wallace Mining Museum**





# BEMP Overview

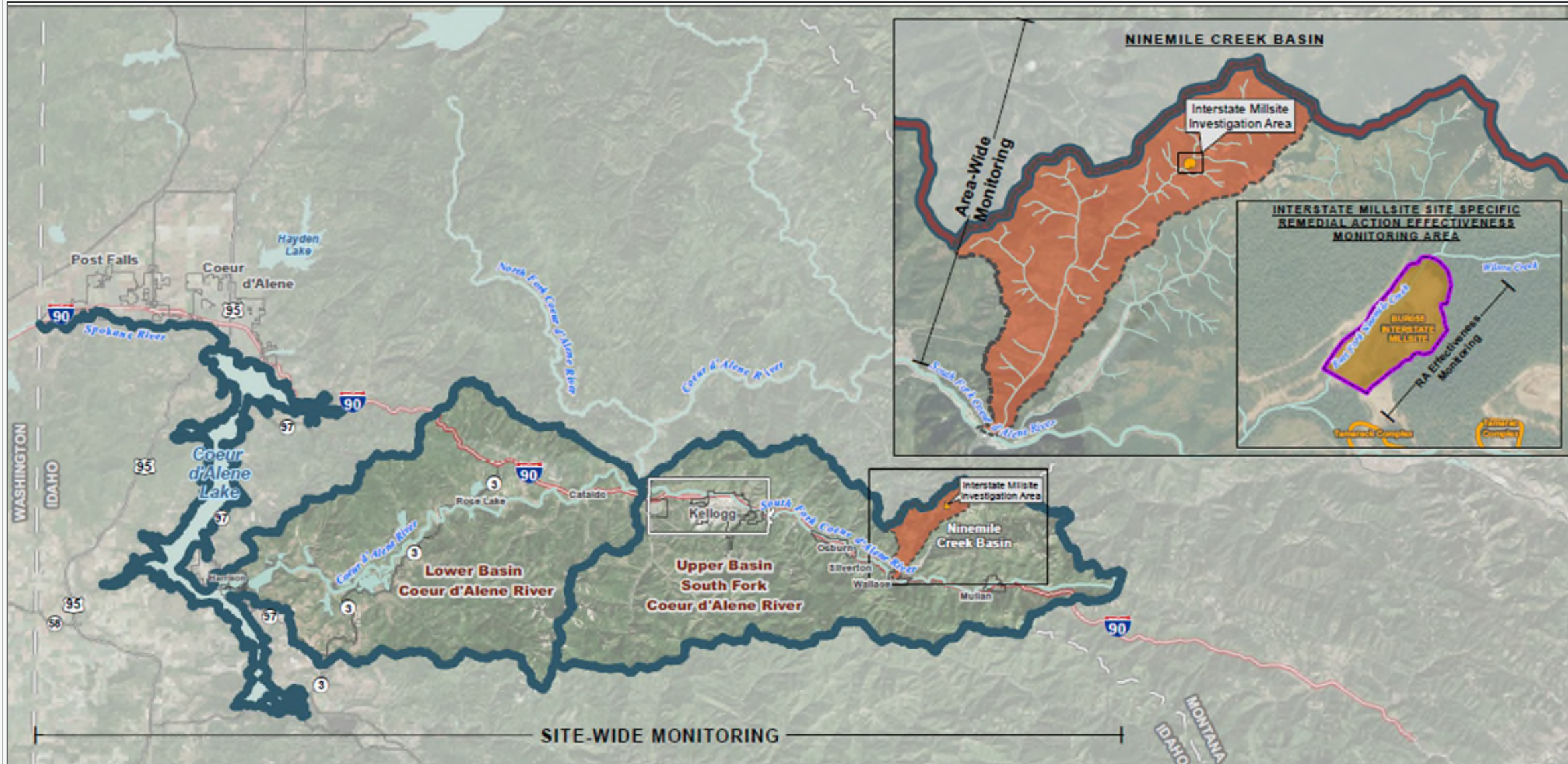


MAUL FOSTER ALONGI

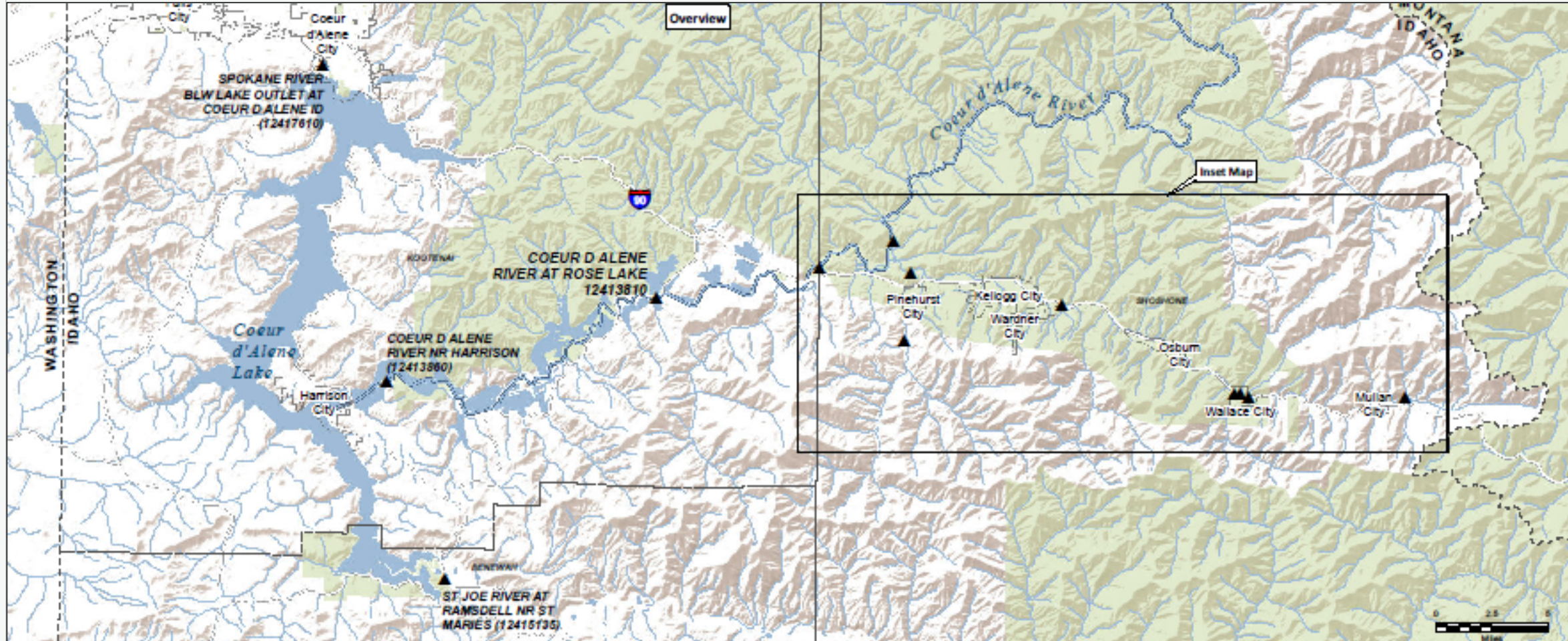
# The Structure



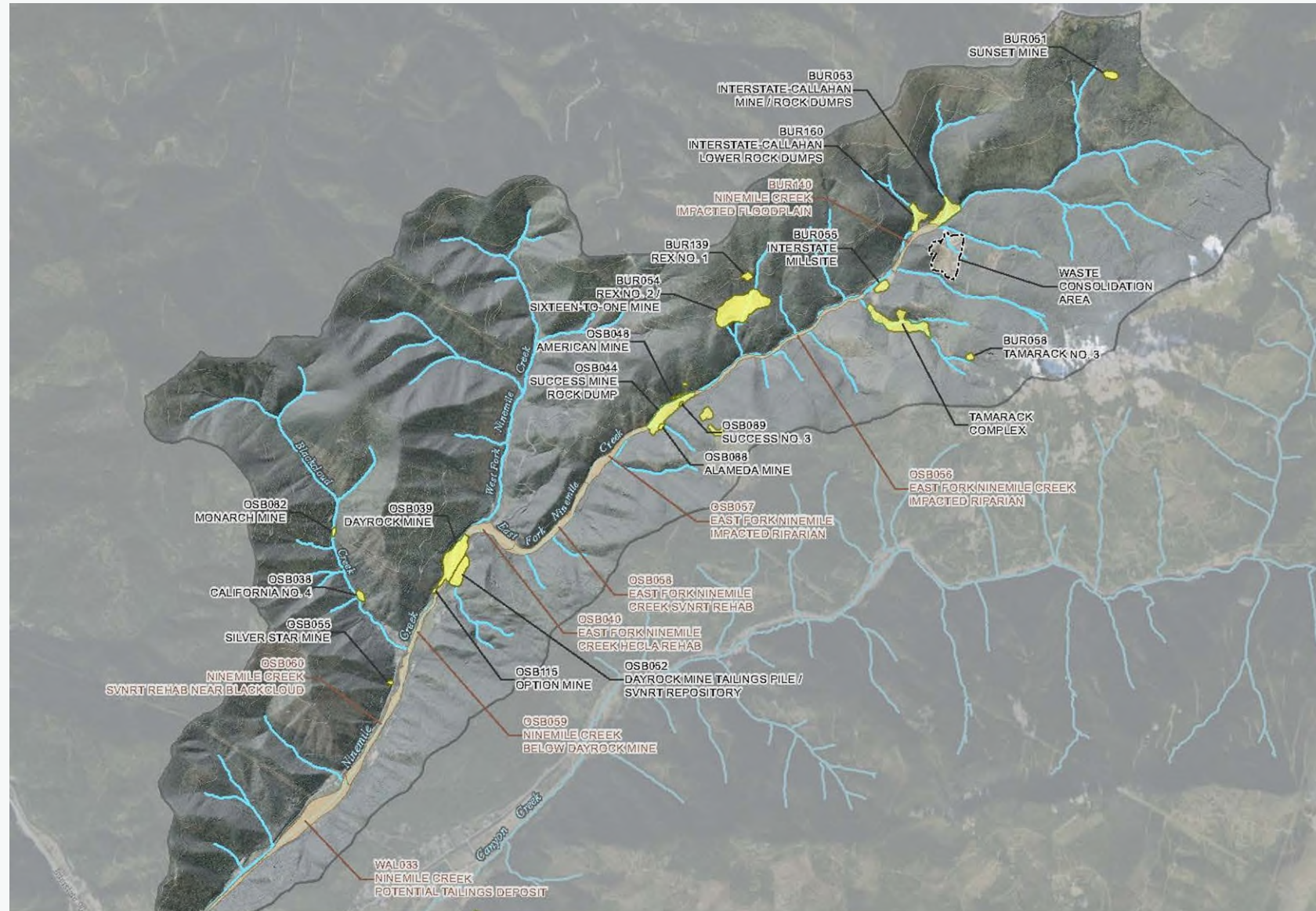
# BEMP Monitoring Structure



# Site-Wide Monitoring

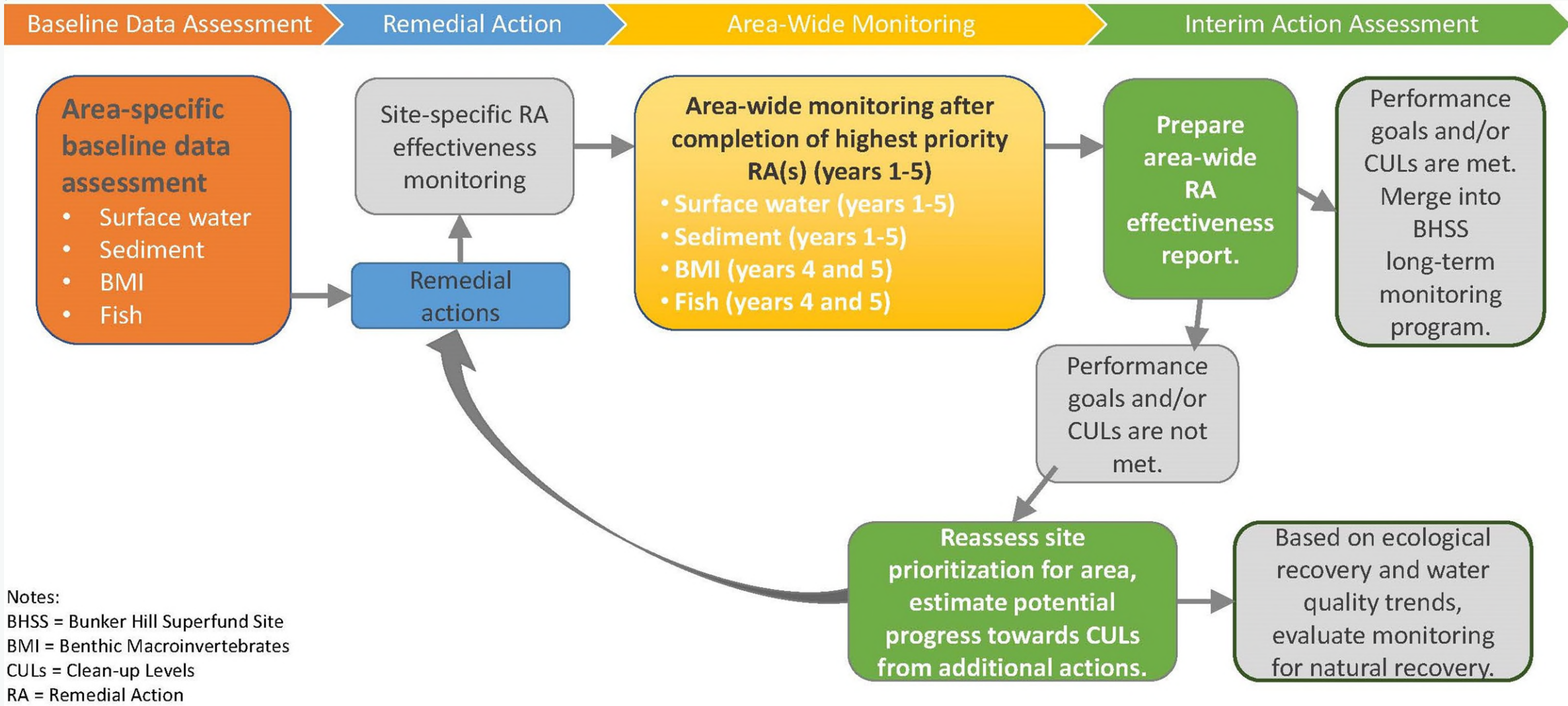


# Area-Wide Monitoring



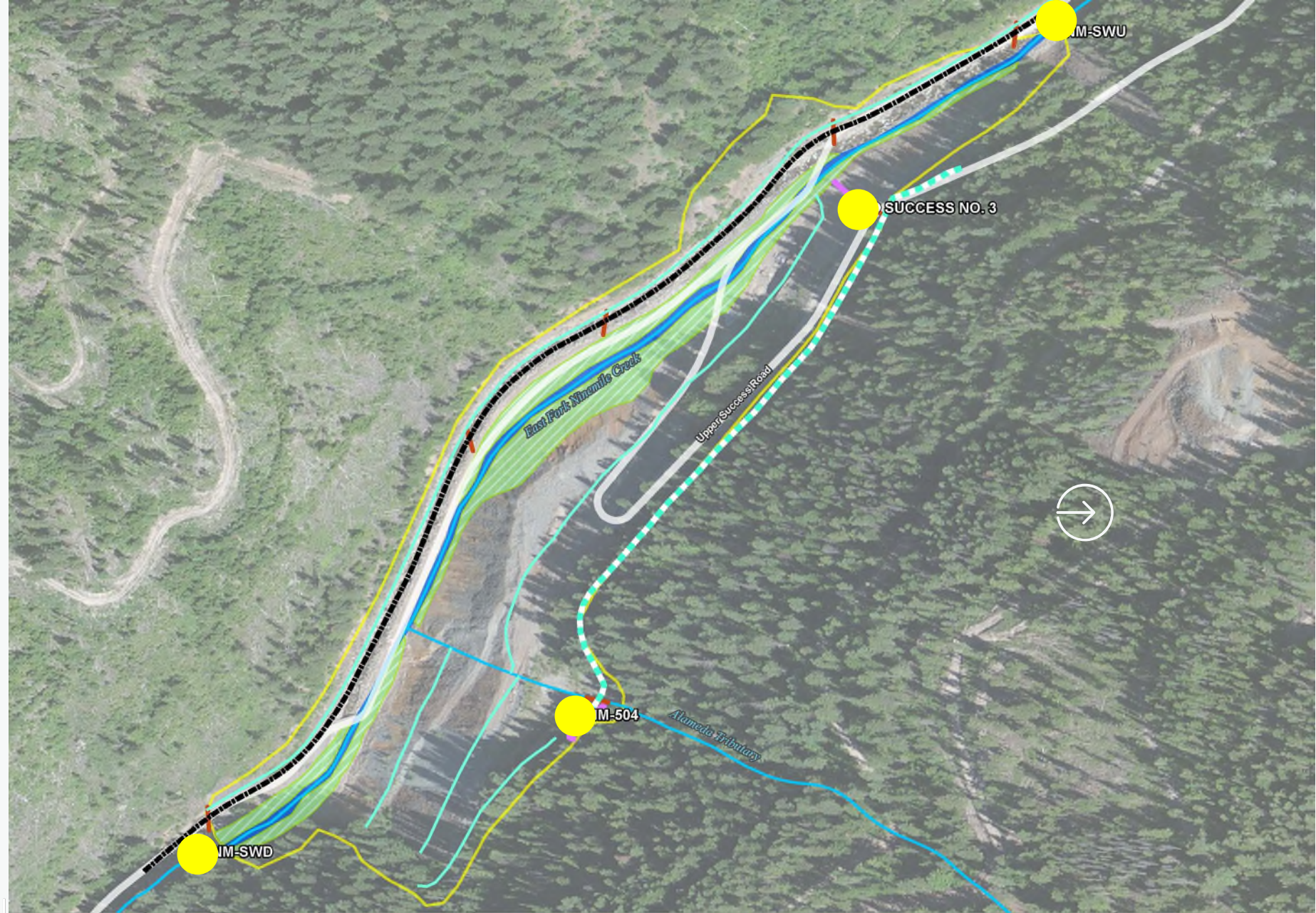


# Area-Wide Monitoring



Notes:  
 BHSS = Bunker Hill Superfund Site  
 BMI = Benthic Macroinvertebrates  
 CULs = Clean-up Levels  
 RA = Remedial Action

# Site-Specific Monitoring



MAUL FOSTER ALONGI



MAUL FOSTER ALONGI



MAUL FOSTER ALONGI

# Site-Specific Monitoring

Baseline Data Assessment

Remedial Action

RA Effectiveness Monitoring

## Site-Specific Baseline Data Collection (as applicable)

- Surface Water
- Groundwater
- Soil
- Sediment

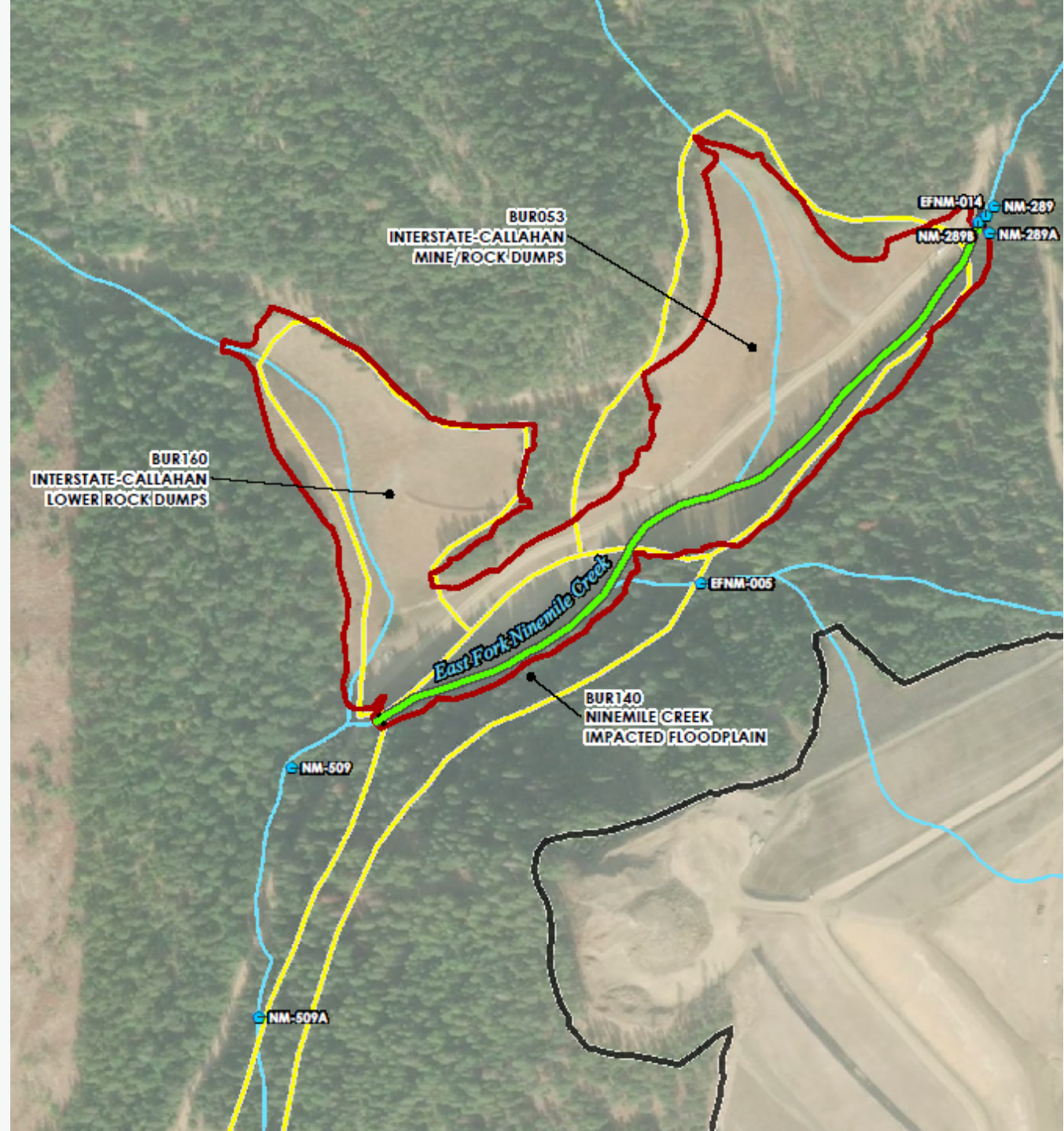
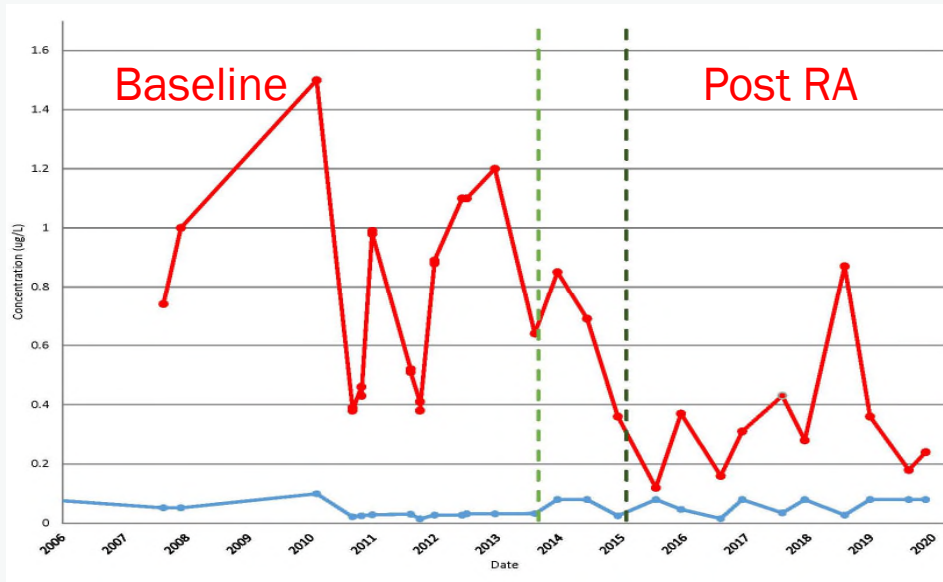
Remedial Action

## RA Effectiveness Monitoring (Years 1-5)

- Chemical Trend in Surface Water (years 1-5)
- Chemical Concentration in Sediment (year 5)

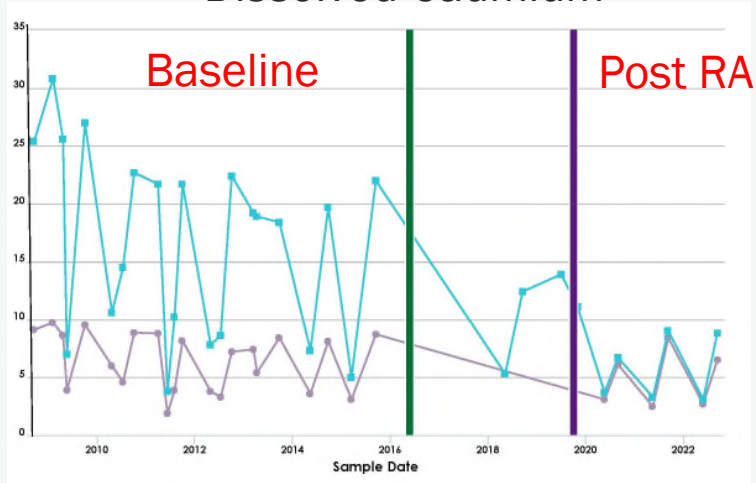
# Case Study – Interstate-Callahan Rock Dump

Dissolved Cadmium

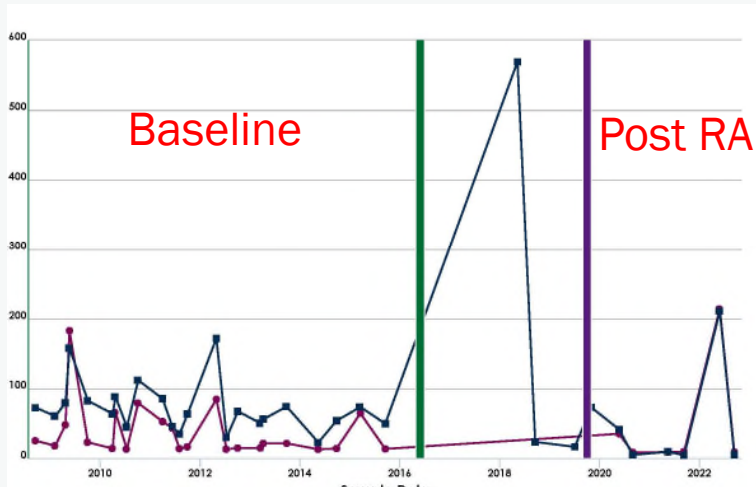


# Case Study – Success Complex

Dissolved Cadmium



Total Lead







# QUESTIONS?

## Christina Johnson, PG

**Senior Geologist**  
**[cjohnson@maulfoster.com](mailto:cjohnson@maulfoster.com)**  
**208.784.1082**



MAUL FOSTER ALONGI