

Application of Landform Grading to Reclaim a Former Wyoming Uranium Mine

Presented by:

Jim Murphy, P.E. – AVI, P.C.

Mark Donner, P.E. – Trihydro Corporation



Acknowledgements

- ◆ Wyoming AML Program
 - Jack Smith
- ◆ Anderson Consulting Engineers
- ◆ Dale Shay – Rimcon
- ◆ Oftedal Construction
- ◆ Beau Hill, P.E.



Past Reclamation Grading Approaches



Image USDA Farm Service Agency
© 2012 Google

Google earth

Imagery Date: 7/4/2009

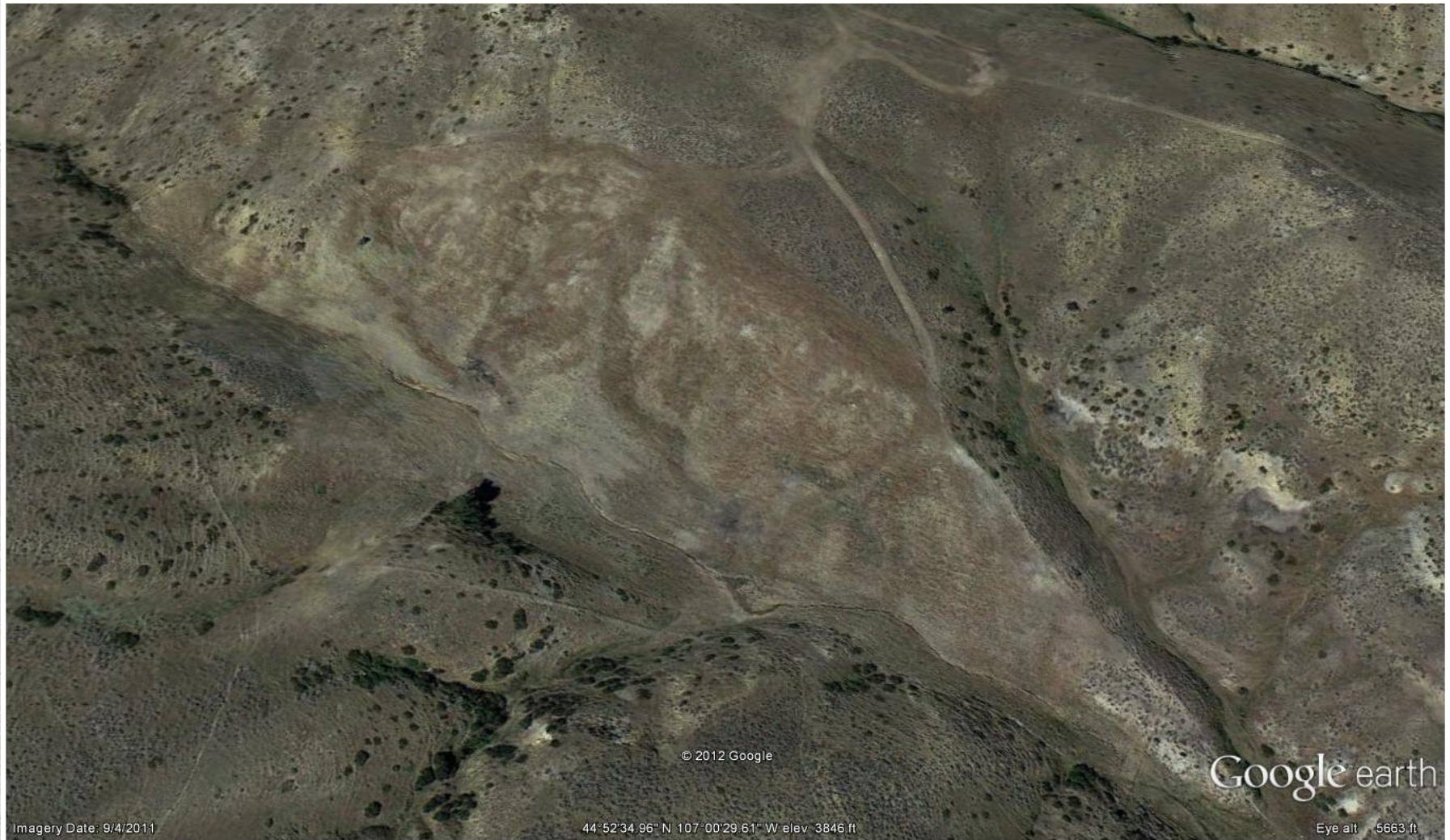
42°47'59.25" N 107°33'59.28" W elev 6634 ft

Eye alt 11459 ft

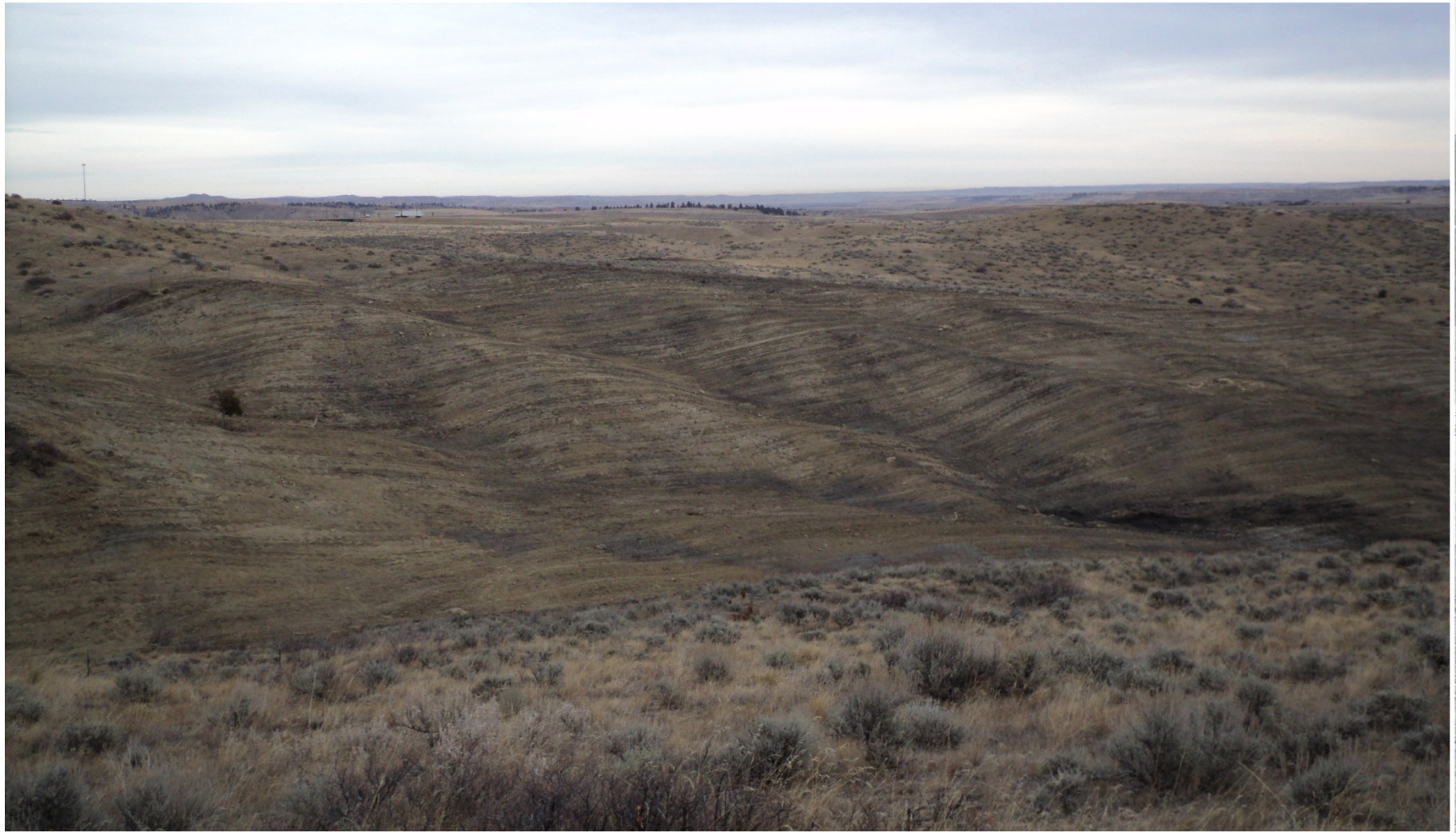
Past Reclamation Grading Approaches



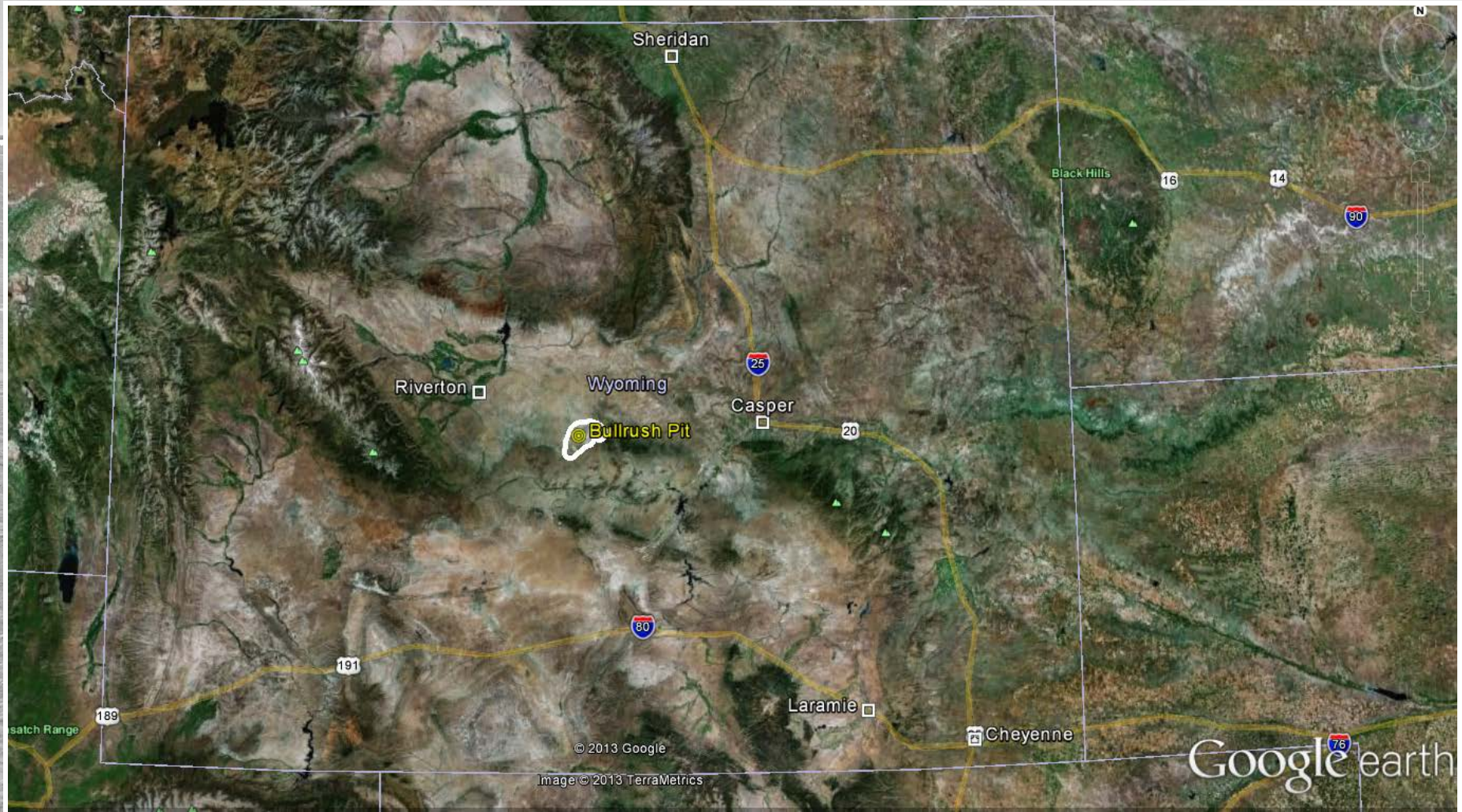
Wyoming AML Reclamation Grading



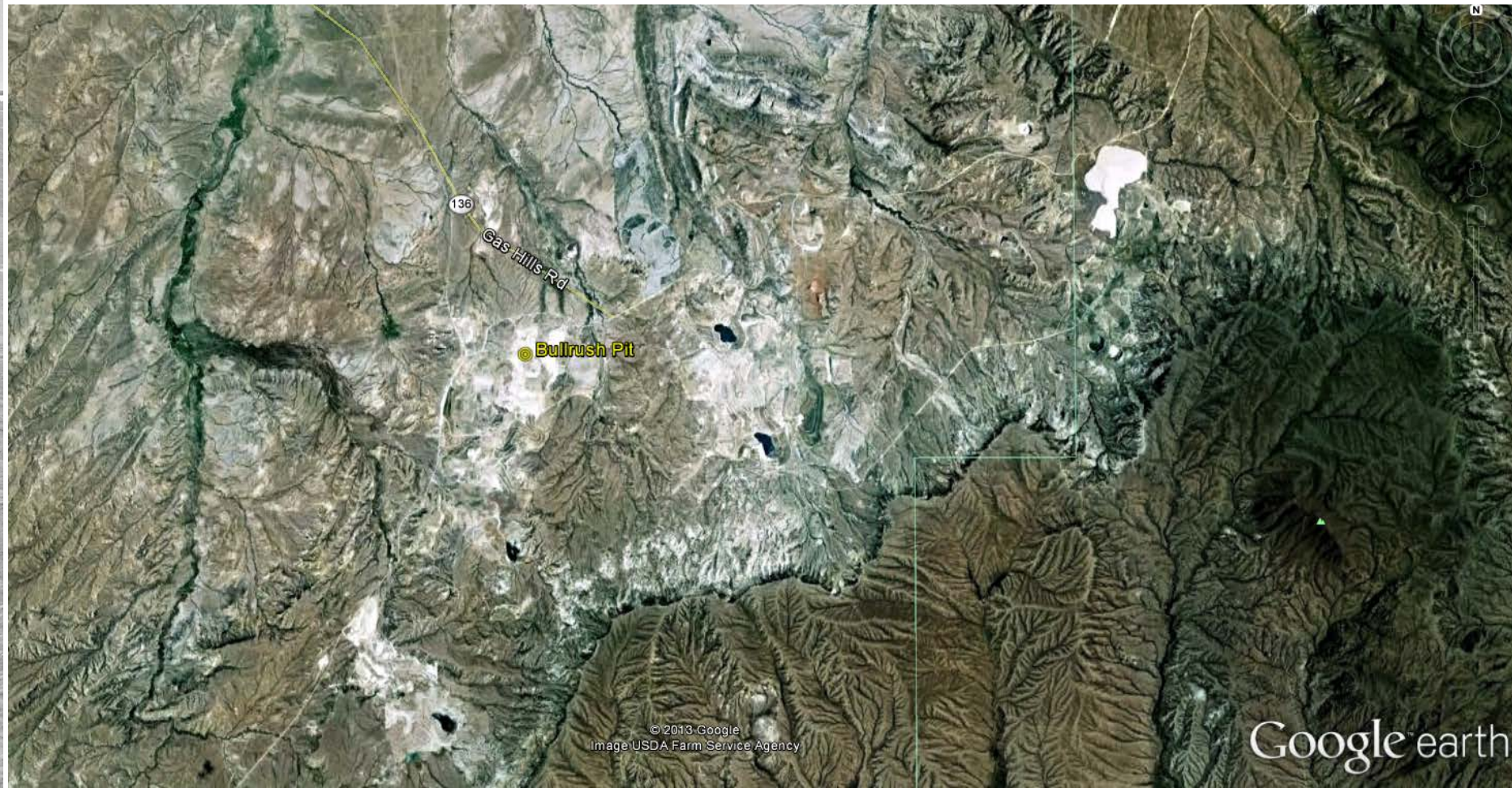
Wyoming AML Reclamation Grading



Project Location



Project Location



Site Conditions and Features

- ◆ 200 acres / 2 million yards
- ◆ Highwalls
- ◆ Spoils
 - Radiometrics
 - Acid production
- ◆ Cover soil availability



Site Conditions and Features



Grading Design

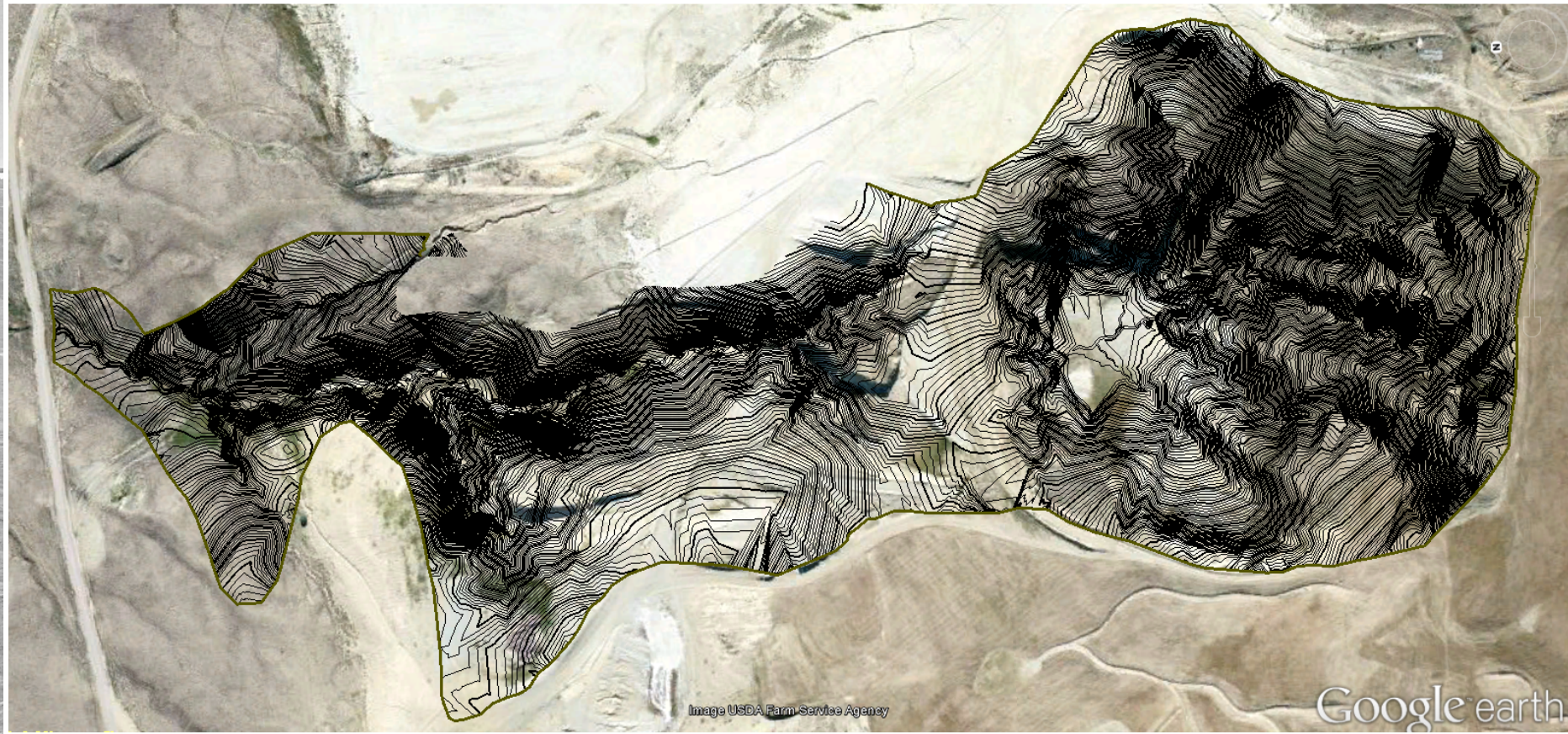


Image USDA Farm Service Agency

Google earth



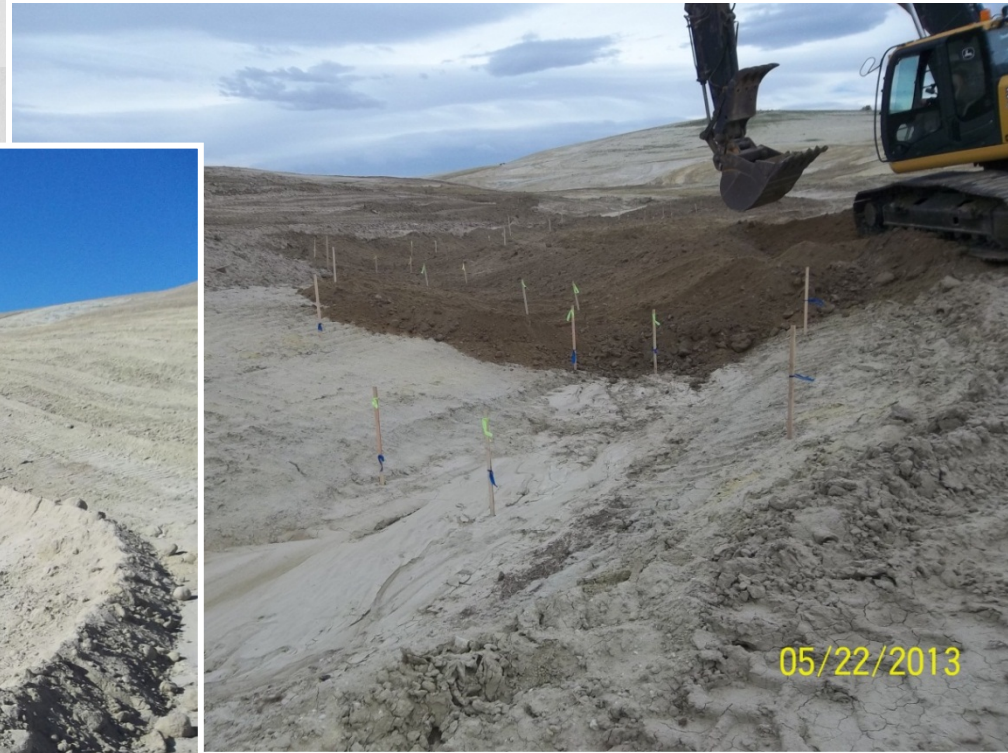
Site Grading



Site Grading



Channel Construction



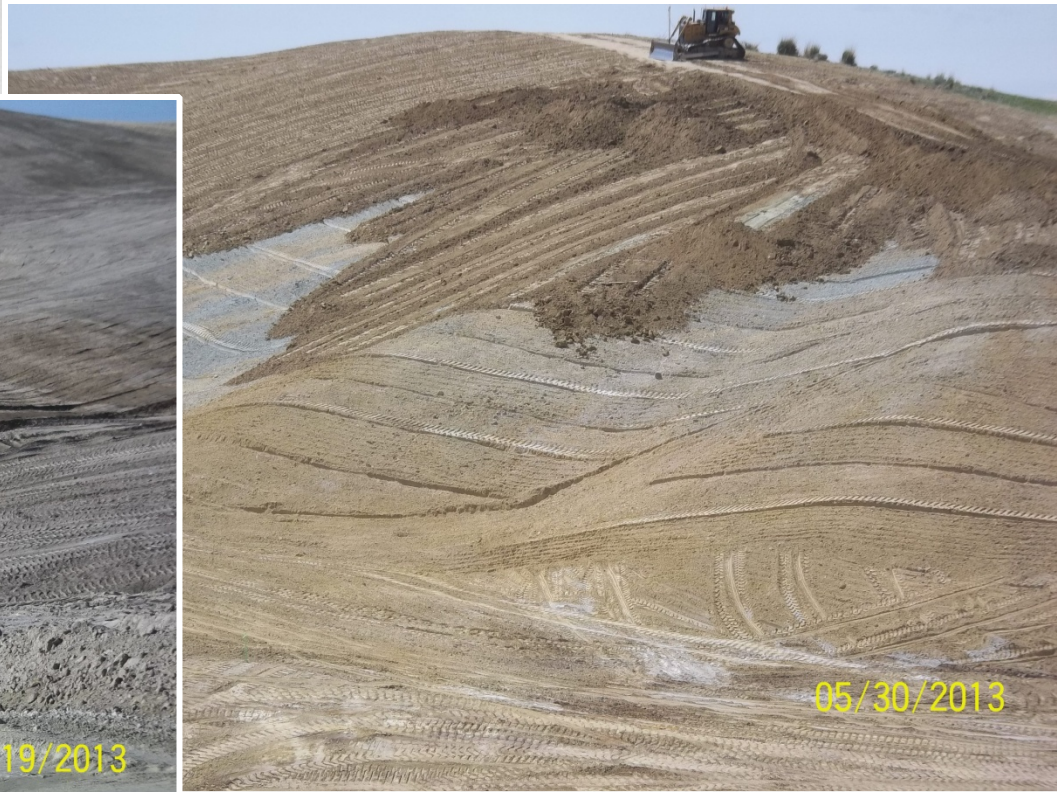
Erosion Control Considerations



Field Adjustments



Cover Soil Placement



Sage Grouse



Finished Site



Finished Site



Questions?

